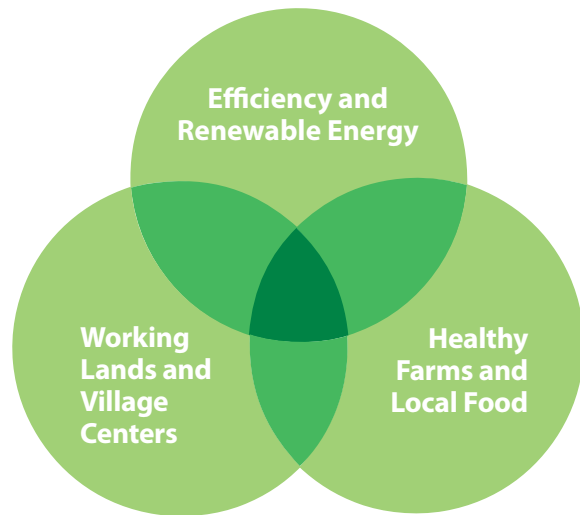


Areas of Focus

Our grantmaking, research, focused convenings, and mission investment support leadership and innovation that:

- **Reduces** reliance on fossil fuels by encouraging energy efficiency and renewable energy;
- **Improves** the sustainability and viability of agricultural enterprise and the security and affordability food systems;
- **Encourages** vibrant, compact settlements surrounded by working farms and forests



High Meadows is particularly attracted to initiatives where our three focus areas overlap.

Our Approach

- We support innovation, social entrepreneurship, and the use of market forces.
- We seek projects that change consumption behaviors or strengthen markets.
- We look for practical, measurable outcomes.
- We emphasize partnerships, community engagement, creative thinking, and shared learning.

Our Values

- We value leadership, relationships, and the people behind the projects we support.
- We seek to maintain transparency and collaboration in our work and among the organizations we support.
- We value partnerships and shared learning with our funding colleagues and with public policy leaders.
- We value the friends we make, the amazing things we learn, and the joy we experience by working with others who share our mission.



The High Meadows Fund

The High Meadows Fund promotes a healthy natural environment while encouraging long-term economic vitality in Vermont

To learn more about our grantmaking, contact:

Gaye Symington, Executive Director
P.O.Box 30

Middlebury, Vermont 05753

Phone: 802 388 3355, ext. 247

Email: gsymington@vermontcf.org

Fax: 802 388 3398

www.highmeadowsfund.org

